

WinFrog Device Group:	RHO/THETA
Device Name/Model:	RADAR Targets
Device Manufacturer:	Racal Survey Group Limited Compass House, Davis Road KT9 1TB , Chessington, Surrey UK Tel: +44 (0)870 601 0000 Fax: +44 (0)208 391 1602 Email: contact@racal-survey.co.uk
Device Data String(s) Output to WinFrog:	\$aData*ck<CR> a = T or O Data = Track number Track velocity Track position Track CPA Time of CPA ck = check sum See the Racal 2690 manual for details.
WinFrog Data String(s) Output to Device:	N/A
WinFrog Data Item(s) and their RAW record:	RADAR TARGETS 918

DEVICE DESCRIPTION:

This device receives coordinates of targets from the radar and plots them on the Graphics window. The color and shape used in the Graphics window may be selected from the Misc tab of the graphics configuration dialog. These targets may be output if the Targets vehicles (OUTPUT) device is present.

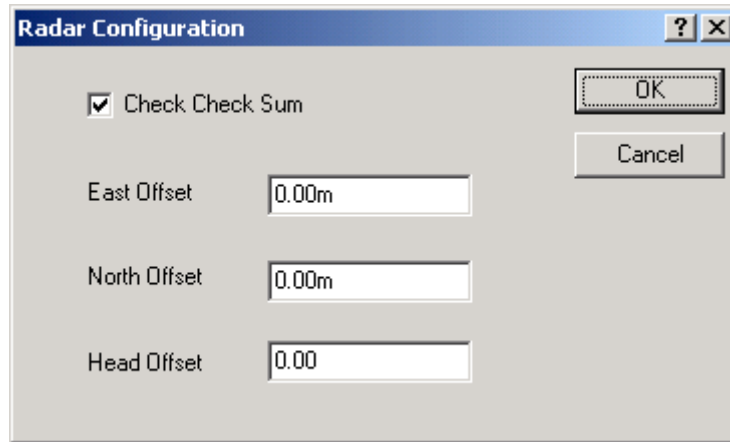
DEVICE CONFIGURATION INSTRUCTIONS

WINFROG I/O DEVICES > EDIT I/O:

Serial
Configurable Parameters

WINFROG I/O DEVICES > CONFIGURE DEVICE:

This device must be configured at the I/O Device window level. In the I/O Devices window, click the device name to select it, then right-click and select Configure Device. The Radar Configuration dialog box appears, as seen below.



Select whether or not to use the checksum. If selected, those records whose check sum determined in WinFrog does not match that transmitted will be ignored. If the radar is outputting coordinates in the range coordinate system, then enter 0 for all offsets. If the radar is outputting relative to the radar itself, then enter the coordinates of the radar in the range coordinate system. Also enter any rotational correction between the zero or reference azimuth of the radar and grid north. Grid north being the local range coordinate system north.

WINFROG VEHICLE > CONFIGURE VEHICLE DEVICES > DEVICE DATA ITEM > EDIT:

Adding the Radar Targets device creates the RADAR data item.

Data item: RHO/THETA, Radar Targets, RADAR

There are no edit or configuration options available for this data item from this dialog window.

TELGRAM SPECIFICATION:

\$aData*ck<CR>

a = T or O

Data = Track number

Track velocity

Track position

Track CPA

Time of CPA

ck = check sum

See the Racal 2690 manual for details.